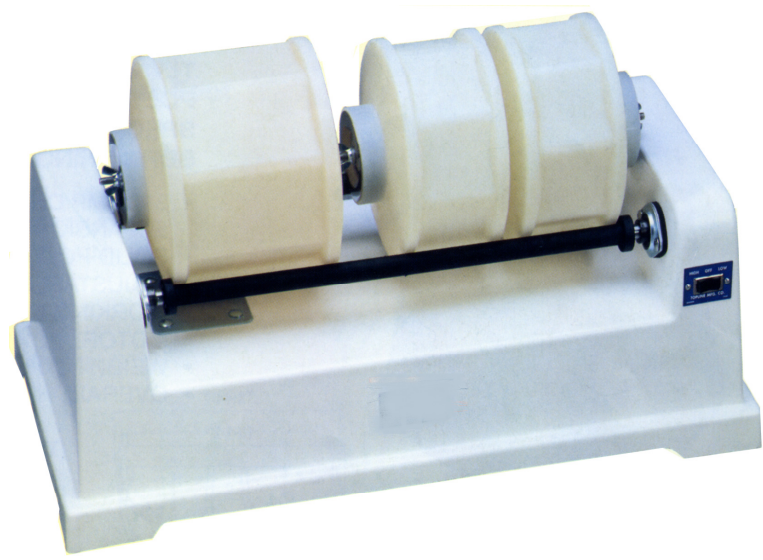


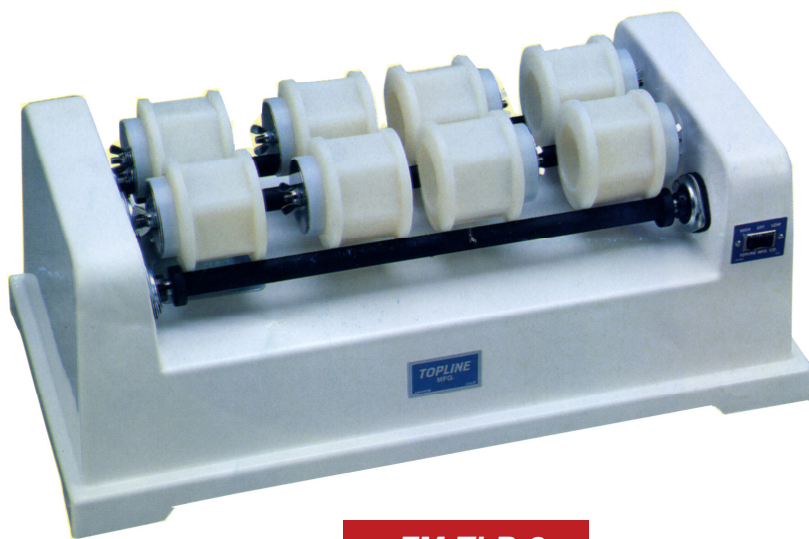
FINISH•MASTER™

FM-TLB Series, Benchtop

Small & Compact
Mix different sized barrels on one base for versatility



■ FM-TLB-2



■ FM-TLB-3

Process multiple types of items at the same time

FM-TLB Series Tumblers

FM-TLB Series Tumblers

FINISH•MASTER FM-TLB Series

Bel Air's rotary tumblers feature durable fiberglass bases with precision ground urethane bars. All models come standard with 2-speed motors (low/high, 1140 & 1725 RPM), which turn the barrels at 467 RPM on low, and 707 RPM on high. Infinite variable speed is available as an option. The FM-TLB-2 is also available in a "mini" model. Every FM-TLB model is 115V 50/60HZ.

Optional barrels are heavy-duty plastic construction and come with stainless steel & neoprene plugs with wingnuts for easy opening/closing. Different sized barrels can be mixed on one base depending on size (see chart).

Standard Features

- Sturdy reinforced fiberglass construction
- Small & compact
- Standard 2-speed
- Optional variable speed

Machine Technical Data

Model	Length (Inches)	Width (Inches)	Height (Inches)	Bar Length (Inches)	Bar Spacing (Inches)	Shipping Weight (lbs.)
FM-TLB-2	36	19	13	24	7-1/2	65
FM-TLB-2 Mini	23	16	13	9-1/4	4-1/2	50
FM-TLB-3	36	19	13	24	3-1/2	65

Barrel Technical Data

	TL-1	TL-2	TL-3	TL-4	TL-5
Capacity	22 fl oz.	3.5 qt.	1.5 gal.	2.5 gal.	8 gal.
Net Weight	1.5 lbs.	2.5 lbs.	3 lbs.	4 lbs.	9 lbs.
Dimensions	4.75" x 4.75"	8.25" x 4.3"	7" x 10"	10.5" x 10.75"	15.75" x 14.75"
Opening	3"	4"	4"	4"	7-1/4"
Max Barrel Fit:					
TLB-2	0	4	3	2	1
TLB-3	8	0	0	0	0
TLB-2 Mini	2	2	2	1	0

